

North Eastern Apiarists' Association Inc.

(VICTORIA)

President: S. Murphy,
Secretary: D. Briggs,

Lima East Rd, Via Swanpool, Vic. 3673
1152 Banksdale Rd, Hansonville, Vic. 3675

Ph: (03) 5768 2432
Ph: (03) 5727 6114

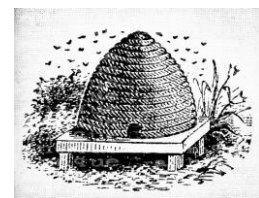
Workshop notes – Assessing queen status and queen performance.

- Is my hive queen-right?
 - Bee behaviour -
 - Presence of brood cluster
 - Fanning, 'looseness' of bees, whining sound
 - Brood at all stages, recognising healthy brood pattern
 - Presence of eggs? One egg or multiples [2-3 or lots]
 - Brood at all stages – or a 'break' in the brood
 - Presence of cells prepared for laying

- Queen rearing stimuli in nature –
 - Swarm, supersedure and emergency
 - Recognising the presence of these
 - Distinguishing drone brood [and why it does not indicate swarming]
 - Mature queen cells, hatched, torn down
 - Time frames of queen cell production
 - Egg => 3 days to hatch
 - Cell => 8 days to capped
 - Cell => 16 days to hatch
 - Expected time from loss of queen to laying – 11 days from starting cell + 5 days orientation and mating + 3 days to begin laying = 19days ave'

- Evaluation of queen performance
 - Signs of a failing queen
 - Brood pattern
 - Raised brood
 - Disease recognition - distinguishing disease from ages
 - Laying worker

- Re-queening
 - Timing – seasonal conditions, state of colony
 - Options – cells, laying queen, self raised
 - Care of queens, care of cells
 - Finding old queen?
 - Re-queening manipulation
 - Checking for acceptance



Honey bee development

| Stage | Days after laying egg | | |
|-------------------|-----------------------|-------|-------|
| | Worker | Queen | Drone |
| Hatching | 3 | 3 | 3 |
| Cell Capped | 9 | 8 | 10 |
| Emerges from cell | 21 | 16 | 24 |

